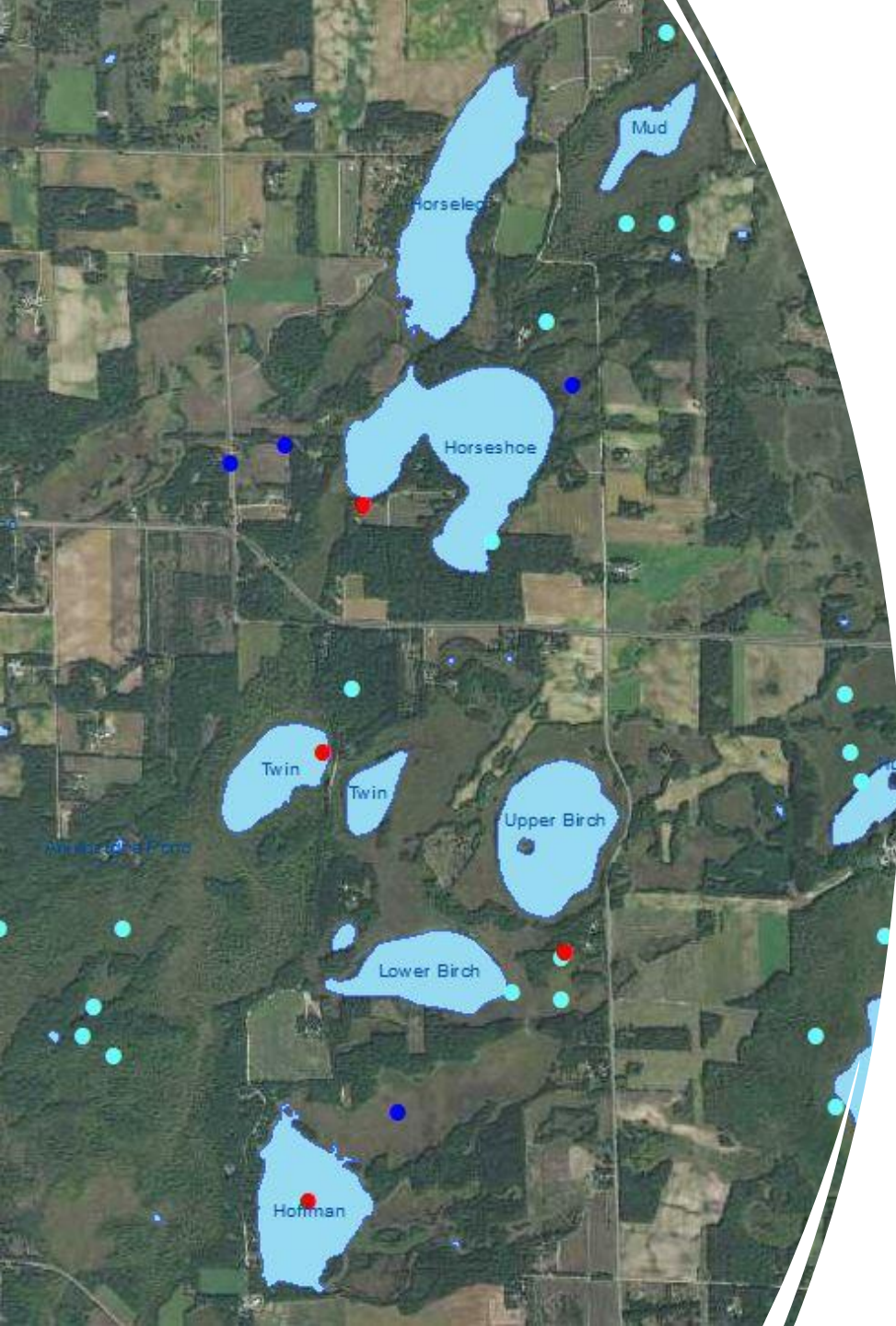
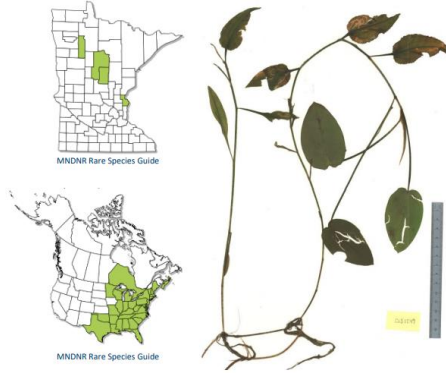


Oxford Lakes- Biological Survey



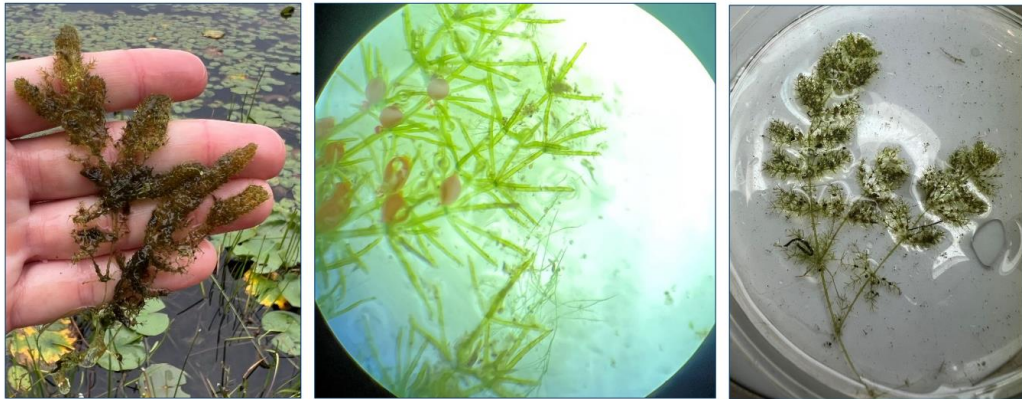
Courtney Schirmers, MN Biological Survey



8

Potamogeton pulcher (state endangered)

Chara hypopitys or close relative
(state record to our knowledge)

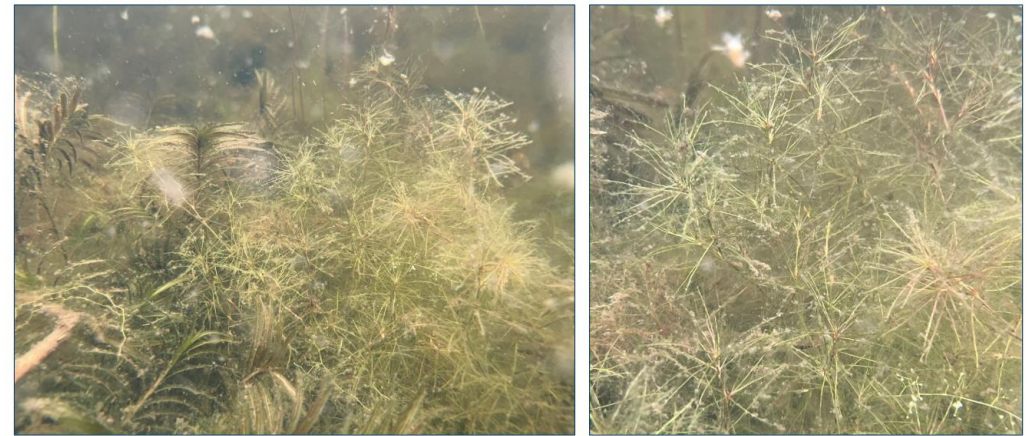


14

Decodon verticillatus (state special concern)



Najas gracillima (state special concern)



12



Living Large on a Small Lake

EXPLORING NATURAL ENVIRONMENT LAKES

NOVEMBER 8TH, 6:30 - 8PM
REGISTER: [TINYURL.COM/SMALL-LAKES](https://tinyurl.com/small-lakes)

In the land of 10,000 lakes, not all lakes are created equal. Join our webinar to learn more about natural environment lakes, a classification reserved for smaller, shallower lakes that have a more limited capacity to absorb the impacts of development and traditional recreational use.

Enjoy a presentation by Joe Bischoff, Senior Aquatic Ecologist at Barr Engineering, gain insights into conservation efforts to monitor and safeguard small lakes earmarked for development, and engage in an interactive Q&A session.



IMAGINE 2045
Isanti County Comprehensive Plan



**Planning Commission Draft
May 2024**

(See Internal Loading Lakes Table 5-4)	
Implementation Actions	
(A) Work with LGUs to set shoreline "view corridors" to 25% of lot width or maximum 35' width and maximum vegetation clearing standards or adopt innovative shoreland standards to protect buffers, native ecosystems, and habitat corridors. See https://www.dnr.state.mn.us/waters/watermgmt_section/shoreland/innovative-standards.html (Funding could be for consultant to get ordinance work done or E&O [education & outreach])	\$
Priority Location	Measurable Output